

REDSTONE FARMS INC. RETIREMENT

AUCTION

THURSDAY, APRIL 30, 2026



LOCATED AT 42550 219TH STREET, CARTHAGE, SD 57323

LIVE BEGINS AT 10:00 AM, SIMULCAST WILL FOLLOW AT 12:30 PM



COMBINES
2020 JD 5790 – 650/85R38 Duals, 750/65R26 Rears, PWR Rear Wheel Drive, Chopper, Contour Master, Long Auger, 1501 SEP. HRS, 1937 Engine HRS

2013 JD 5680 – 650/85R38 Duals, 750/65R26 Rears, PWR Rear Wheel Drive, Chopper, Contour Master, Precision Planting Yield Sense Module (No Monitor) Long Auger, 2,772 SEP. HRS, 4,205 Engine HRS

TRACTORS

2014 JD 8245R - PWRSHFT, 3PT, 4 SCV, 1000 PTO, 480/80R50 Rear Duals 420/85R34 Fronts, 4,210 HRS

1995 JD 8400 MFWD – PWRSHFT, 3PT, 5 SCV, 1000 PTO w/540 Adpt. 480/80R46 Duals, 380/85R34 Fronts, 11,680 HRS

2010 JD 9430 - PWRSHFT, 6 SCV, 1000 PTO, 710/70R42 Front and Rear Duals, 5,457 HRS

JD 4450 – PWRSHFT, 3PT, 540/1000 PTO, 3 Rear Remotes, 20.8-38 Rears, Recent Engine Work

1963 JD 4010 - WF, Factory Fenders, Syncro Range, 540 PTO, 3PT, 1 Rear Remote, 16.9-34 Rears, 10,708 HRS

SPRAYER

2008 JD 4930 – 1250 Gal Tank, 120' Booms w/ BoomTrac Section Control, 20" Nozzle Spacing, 2630 Monitor w/ Autosteer and Swath Control, 3000 Starfire Globe, Side Inductor, 5,337 Hours

HEADERS

2022 JD C12R – 12 Row 30" Corn Head, Header Height Sensors, Hyd. Deck Plates, Low Acres

2023 JD C12R – 12 Row 30" Corn Head, Header Height Sensors, Hyd. Deck Plates, Low Acres

2019 JD 745FD – 45' HydraFlex Draper Head, Forward/Aft Reel, Header Height Control

2020 JD 740FD – 40' HydraFlex Draper Head, Forward/Aft Reel, Header Height Control, With AWS AIRBAR AIR REEL

TRAILERS

2024 Timpte Super Hopper – 50' Triple Axle (3RD Axle Lift) Thunder 7000 Elect Remote Controlled Tarp, 72" Sides, EZFLOW Hyd. Traps, 11R24.5

2024 Timpte Super Hopper – 50' Triple Axle (3RD Axle Lift) Thunder 7000 Elect Remote Controlled Tarp, 72" Sides, EZFLOW Hyd. Traps, 11R24.5

2008 Timpte Super Hopper – 42' Tandem Axle, Thunder 7000 Elect Remote Controlled Tarp

2004 Wilson Road Brute – 53' Drop Deck, Spread Axle, 255/70R22.5, Steel Budd Rims, Wooden Deck

1999 Transcraft Flatbed – 48' Float w/ Shop Built Hay Sides, 285/75R24.5, Alum. Budd Rims

2000 Delta Gooseneck – 26', 5' Beavertail w/ 3 Flat Folding Ramps, Single Tandem Axle, 16" Rims

2022 Nova Dump Trailer – 14' Elec/Hydr. Dump, Tndm Axle, Solar Charge, Toolbox, Roll Tarp, Slide in Ramps

TRUCKS

2004 PETE 379 - Cat C15, Eaton 13 Speed, 280" WB, Sliding 5TH, 60" Sleeper, 1,244,900 Miles, Recent O/H 475 Hp

2010 INT Prostar - ISX 450 Cummins, Eaton 13 Speed, 254" WB, Sliding 5TH, Alum Wheels, 22.5", 60" Sleeper, 641,436 Miles

1997 FREIGHTLINER USF-1E – Detroit 60 Series, 255" WB, Eaton 10 Speed, Steel Budd Wheels, 24.5, 60" Sleeper, 1,109,000 Miles

OTHER EQUIPMENT

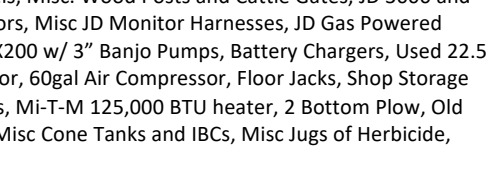
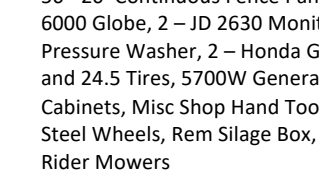
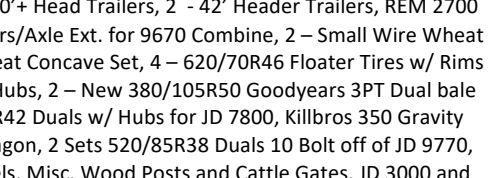
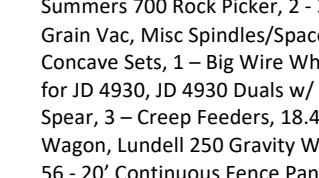
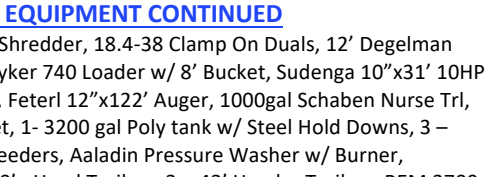
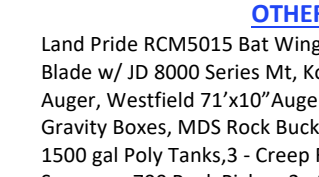
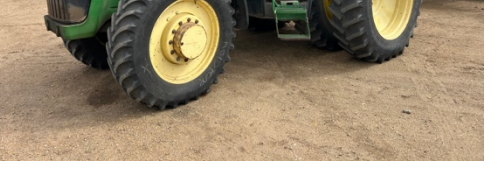
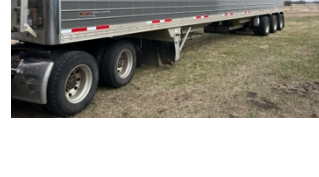
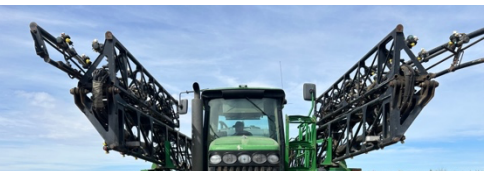
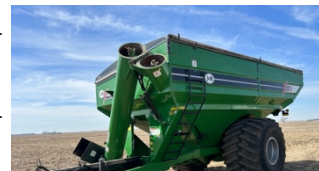
JD 400 Rotary Hoe 30", JD Danish Tine, Brillion 4 Shank 30" Ripper, Case 730B Disk w/ Ripper, JD 2310 Mulch Finisher 49" 9", Salford 570 36 HS Vertical Till, JD 637 Rock Flex Tandem Disk w/ 3 Bar Harrow 37" 10", JD 610 37" Chisel Plow

2006 JD 1890 Air Seeder/1910 Cart - 42'6", 7.5" Spacing, All Hydr. Driven and Folding, 270 Bu Cap.

Brandt GrainBelt 1545 – 26.5HP Kohler Motor, Hydraulic Lift/Drive Self Propelled Conveyor 15"x45'

Summers RT8430 Roller Packer - 3 Sect. 50', Hydr. Rear Fldg

2023 J&M X1312-20 - Wireless Scale, 1000 PTO, 20"XTD Auger



AUCTION DAY TERMS

Cash, good check or credit card (3% processing fee) made payable the day of the sale. Announcements made the day of sale take precedence over all printed material or previous oral statements. Not responsible for accidents, injury, or theft. All items sold "As Is Where Is." All items to be removed by May 7, 2026, unless prior arrangements are made. Any items sold online must be picked up in person, no shipping.

SALE SITE DIRECTIONS

From Carthage, SD – Head North on Hwy 14 (425 AVE) APPROX. 3 Miles to 219TH Street. Then head East for ½ Mile – Located on North Side of Road

ONLINE BIDDING

To bid online visit <https://www.equipmentfacts.com> and register for an account or login prior to the auction.



Online Bidding Provided By
Equipmentfacts
Powered by TractorHouse.com, MachineryTrader.com, TruckPaper.com & MarketBook.com

Contact

Mike: 605-354-2138

Troy: 605-270-6208

OTHER EQUIPMENT CONTINUED

Land Pride RCM5015 Bat Wing Shredder, 18.4-38 Clamp On Duals, 12' Degelman Blade w/ JD 8000 Series Mt, Koyker 740 Loader w/ 8' Bucket, Sudenga 10"x31" 10HP Auger, Westfield 71"x10" Auger, Feterl 12"x122" Auger, 1000gal Schaben Nurse Trl, Gravity Boxes, MDS Rock Bucket, 1- 3200 gal Poly tank w/ Steel Hold Downs, 3 – 1500 gal Poly Tanks, 3 - Creep Feeders, Aaladin Pressure Washer w/ Burner, Summers 700 Rock Picker, 2 - 30'+ Head Trailers, 2 - 42' Header Trailers, REM 2700 Grain Vac, Misc Spindles/Spacers/Axle Ext. for 9670 Combine, 2 – Small Wire Wheat Concave Sets, 1 – Big Wire Wheat Concave Set, 4 – 620/70R46 Floater Tires w/ Rims for JD 4930, JD 4930 Duals w/ Hubs, 2 – New 380/105R50 Goodyears 3PT Dual bale Spear, 3 – Creep Feeders, 18.4R42 Duals w/ Hubs for JD 7800, Killbros 350 Gravity Wagon, Lundell 250 Gravity Wagon, 2 Sets 520/85R38 Duals 10 Bolt off of JD 9770, 56 - 20' Continuous Fence Panels, Misc. Wood Posts and Cattle Gates, JD 3000 and 6000 Globe, 2 – JD 2630 Monitors, Misc JD Monitor Harnesses, JD Gas Powered Pressure Washer, 2 – Honda GX200 w/ 3" Banjo Pumps, Battery Chargers, Used 22.5 and 24.5 Tires, 5700W Generator, 60gal Air Compressor, Floor Jacks, Shop Storage Cabinets, Misc Shop Hand Tools, Mi-T-M 125,000 BTU heater, 2 Bottom Plow, Old Steel Wheels, Rem Silage Box, Misc Cone Tanks and IBCs, Misc Jugs of Herbicide, Rider Mowers

MIKE & JANEY ROWAN, OWNERS



WEGENER REALTY & AUCTION COMPANY, LLC

"YOUR FULL-TIME PROFESSIONALS"

James M. Wegener, Broker/Auctioneer: (402)-920-0992

James "Schuyler" Wegener, Associate Broker/Auctioneer: (402)-920-3196



43734 340 Avenue, Humphrey, NE 68642

www.wegenerauction.com