



# ZIEMER HILBRANDS AUCTIONS

The following described property will be sold by online auction only at [www.ziemerauctions.com](http://www.ziemerauctions.com)

**AUCTION OPENS THURSDAY, FEBRUARY 5th**  
**AUCTION ENDS THURSDAY, FEBRUARY 26th**  
**CLOSING BEGINS AT 5:00 PM**

**LOCATION:** 501 Lakeland Drive SE, Willmar MN  
 2 blocks south of US Hwy #12 on Lakeland Drive SE

**VIEWING:** SATURDAY, FEBRUARY 14 10:00 AM-12:00 NOON and MONDAY, FEBRUARY 23 4:00 PM-6:00 PM  
**LOAD OUT:** FRIDAY, FEBRUARY 27 10:00 AM-2:00 PM

## INFORMATION:

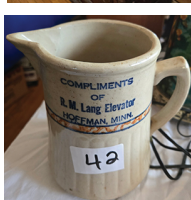
MARK ZIEMER • 320-979-4044

TERRY HILBRANDS • 239-777-3120



## FURNITURE

Writing desk w/pigeon holes • Ornate buffet w/mirror  
 Coat & hat rack • Claw-foot large ball-foot lamp table  
 Flat top trunk • Metal lawn chairs  
 Oak kitchen chairs • Piano bench  
 Chrome kitchen table • Chimney cupboard  
 Blonde dresser & matching chest of drawers



## VEHICLES

1988 Chevrolet Caprice Classic car, 5.0 ltr, V-8, automatic, 4 door, 81,000 miles, nice  
 2000 Oldsmobile Intrigue car, V-6, automatic, 4 door, 156,000 mi



**COINS** Approx 150 lots collectible coins incl \$5 gold piece, silver dollars, quarters, half dollars, dimes, wheat pennies, other

## ANTIQUES & COLLECTIBLES

5 cent peanut machine on stand • Oil lamps  
 5 cent candy machine • Cast iron frying pans  
 Pen collection • Draw knife • Wash boards  
 Dress form • Ice tongs • Oil jar • Hub caps  
 Glass butter churn • Music books • Crock bowls  
 Mantle clocks • 5 gallon motor oil advertising can  
 Cap collection • Large dress form • Watch fobs  
 Remington wooden shell box • Metal runner sled  
 Heileman's Old Style Lager beer light • Marbles  
 Old Coca Cola thermometer • Several old license plates • Cream cans  
 Cuckoo clock • Coal iron • Red Wing 12 gallon crock • Copper boiler  
 Gone With The Wind lamp • RM Lang Elevator crock pitcher, Hallway  
 Threshing machine oil can • Ingraham wall clock • Behren shotgun can  
 Shoe last • Large Hires Rootbeer thermometer • Grey Hound kids wagon  
 Metal wash tubs • Crock Market Co bean pot • Advertising milk bottles  
 Crock advertising bean pot, Erickson Co, Barrett, MN • Pictures & frames  
 Oak table top record player • Peters wooden shell box • Bakelite radios  
 Arrow 8 gauge paper shells & box • Old Copenhagen snuff thermometer



## ONLINE REAL ESTATE AUCTION

2 story, 4 bedroom home on .79 acre. Main floor kitchen w/lots of cupboard space, full bath, large 12'x26' open dining room, living room, 1 bedroom. Upstairs has 3 bedrooms and large walk-in closet. Full basement. Large 8'x20' porch entry way. Forced air furnace. City water, sewer, natural gas. Fixer-upper property. Unattached 24'x40' 2-stall garage, insulated w/12'x12' office area and 2 overhead garage doors and entry door. Unattached 20'x22' garage w/2 garage doors.

## OPEN HOUSES:

Saturday, February 14 10 AM-12 NOON

Monday, February 23 4:00-6:00 PM



## PROPERTY DESCRIPTION:

SECT 13, TWP 119, RANGE 35

Property ID #95-913-1210

501 Lakeland Drive SE, Willmar

INFO: Mark Ziemer 320-979-4044 or Terry Hilbrands 239-777-3120

TERMS: \$5,000 non-refundable earnest money made to JMS&K Law Office. Buyer will enter into a non-contingent cash purchase agreement. Real estate sold as-is. Owner reserves the right to reject any or all bids. Buyer's premium applies.

## TOYS

Many 1/16 toy tractors: JD, Allis Chalmers, International, Case, Ford  
 Ertl Caterpillar 1/16 scale toys: scraper, dozers, dump truck, earth mover, others  
 Lionel train set w/transformer & track • Old tin toys  
 Cast iron wagons w/horses • Small livestock pieces  
 Tin wind up Caterpillar w/driver & metal tracks



Small tin steam engine  
 Tonka toys • Many 1/64 toy tractors  
 Case steam engine • Cast iron tractor  
 Aluminum Grey Hound bus  
 Old toys cars & trucks  
 Toy machinery pieces  
 Wind up drummer boy



## MISC

Battery charger • Stihl 021 chain saw  
 Stihl hedge trimmer • Wooden picnic table  
 Portable air compressor • Wheel barrow  
 Screw jack • Walking plow • Misc tools  
 Car ramps • Construction heavy duty log chain  
 Lowboy push mower • Platform scale (nice)  
 Log chains • Lawn windmill



**John Deere double fly wheel type E, 1-1/2HP hit & miss gas engine, nice**  
**(2) Maytag gas engines • Gas engine oilers**

**FLOYD PERLEBERG, OWNER**

## ZIEMER AUCTIONEERS, HILBRANDS CLERK

Mark Ziemer, Lic 34-36, 320-354-4312, Cell: 320-979-4044

Brian Ziemer 320-354-5308

Terry Hilbrands 239-777-3120

Jordan Lorentz 320-292-9131

Not responsible for accidents.

TERMS: 10% Buyer's Premium.

Cash, Credit Card, Approved Check.

No Items Removed Until Settled For. Everything Sold As Is.

\*\*SEE REAL ESTATE FOR TERMS\*\*

[www.ziemerauctions.com](http://www.ziemerauctions.com) or [midwestauctions.com](http://midwestauctions.com) (click on Ziemer)

Follow Ziemer Auctioneers on Facebook